

LANGUAGE PROFICIENCY TESTING

Testing

- It's a small school
- The Testing Center
 - Open five days a week
 - Staffed with
 - Program Managers
 - Testing Administrators
- The test
 - Language Proficiency
 - F2F and VTC
 - 3 skills: Reading, Speaking, Listening

Testing

- The testers
 - Double-hatted
 - 4/4/4 to teach and to test
- The test takers
 - Employees and students
 - Applicants
 - Others

Testing Certification

- The participants
 - Instructors
 - Position requirement
 - Minimum of 6 months experience in our classrooms
 - Language officers
 - Vetted volunteers
 - Vetted contractors
- The trainers = the examiners = PMs

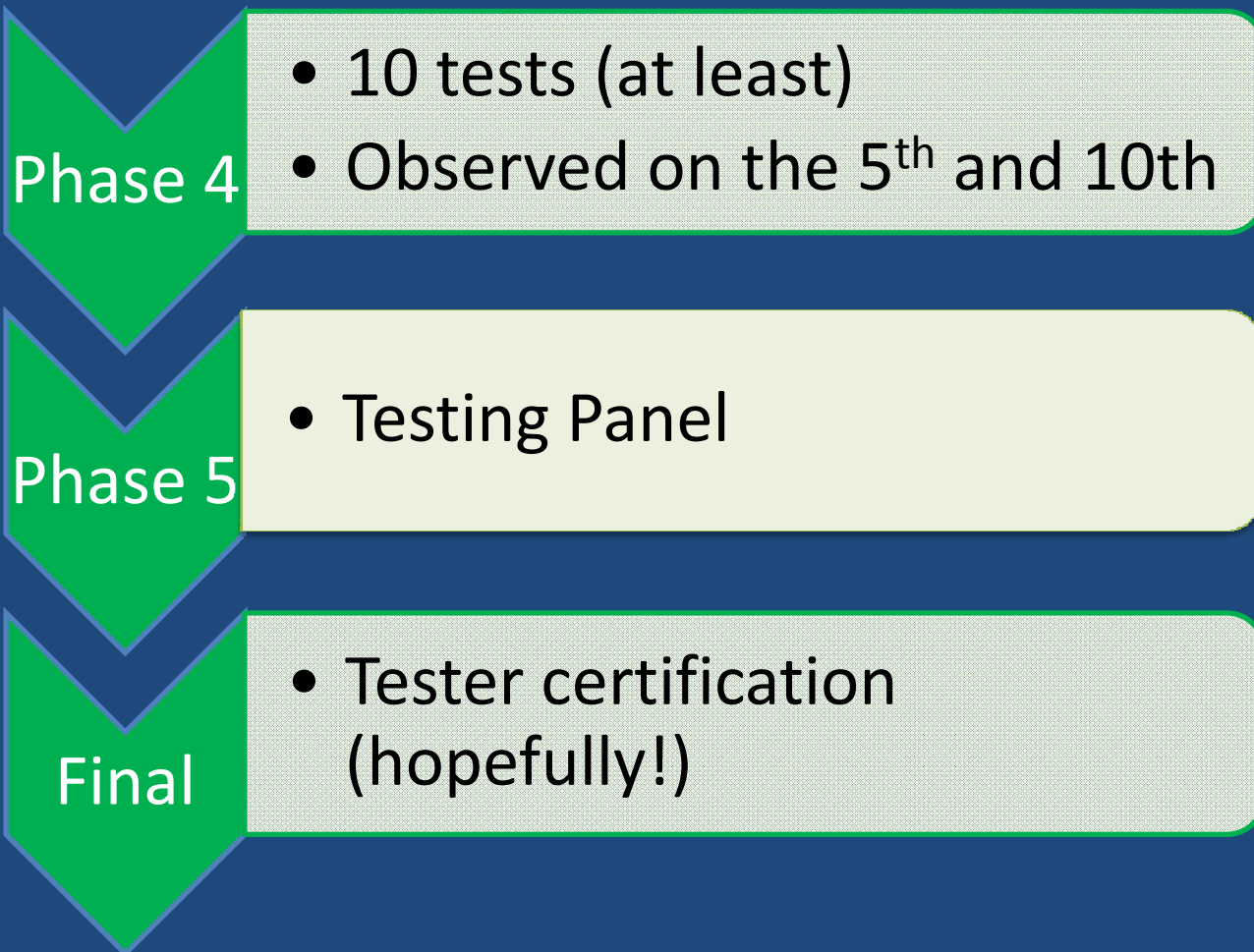
Testing Certification

- The process, 6-12 months



Testing Certification

- The process



Tester Certification

Remedial program

Sometimes, it takes a village



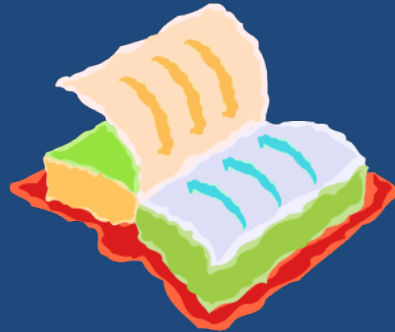
- Tailored Work plan with mentor(s)

- Final assessment



Tester Materials Aids

- Tester Manual



- Hand outs



- Actual Tests



- Volunteers

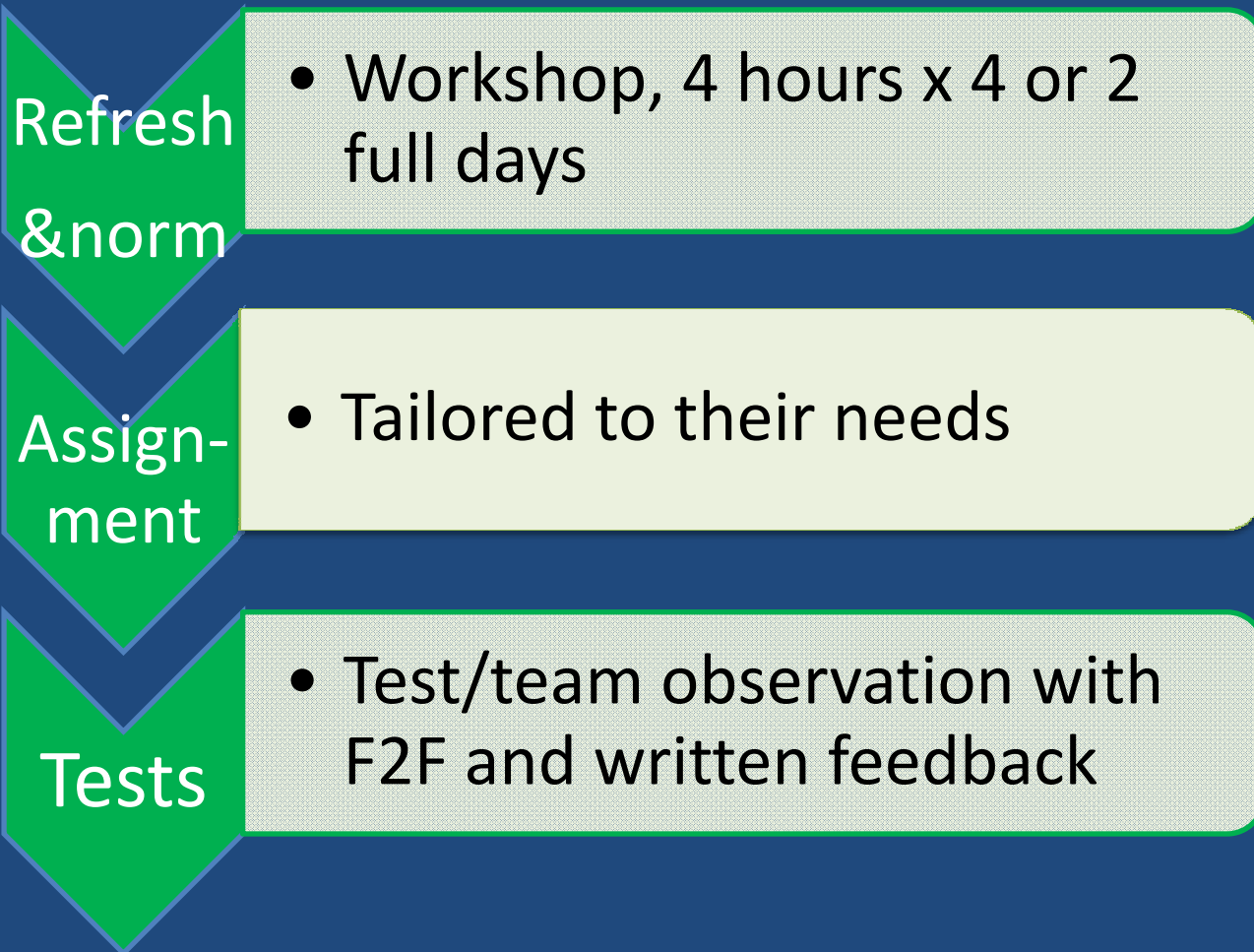


- Regulations/forms



QA & QC

- Recertification, every three years



QA & QC

Test observations

Test
obs.

- Unannounced

Test
obs.

- 4 per year

Test
obs.

- F2F discussion
- F2F an written feedback

QA & QC

Spot observations

Spot
obs.

- Unannounced

Spot
obs.

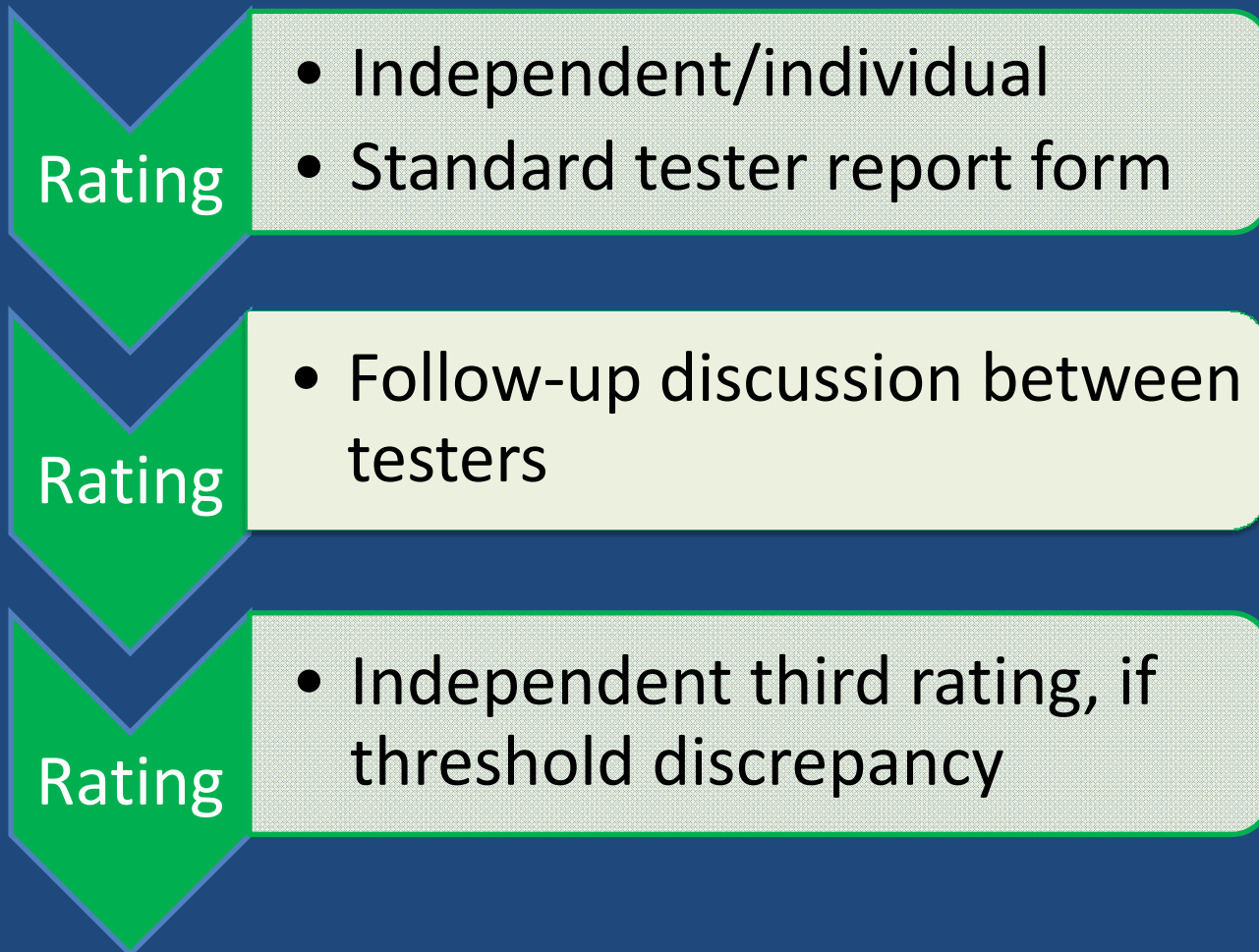
- Anytime, any number

Spot
obs.

- F2F feedback immediately after the test

QA & QC

Rating the test



QA & QC

The tester's roles

Tester

- One of two active testers
- Sole tester paired with an examiner

Tester

- Second rater (when only one tester is available to test)

Tester

- Third rater
 - Score discrepancy
 - Re-evaluation, at test taker's request

QA & QC

Remedial program

- Repeated tester performance gaps/issues:
 - Tailored Work plan
 - Mentor
- In especially challenging cases...
 - All of the above
 - Coaching by examiner
- Outcome
 - Successful: recertification
 - Unsuccessful: decertification

Test format

- The Reading Proficiency Test
 - Computer Adaptive Test (CAT)
 - Test 1: 0 to 3, 90 minutes
 - Test 2: 3+ to 5, 90 minutes
 - Translations (TL to English)
 - 3 passages, 3 consecutive levels, 2 hours

Test format

- The Speaking Proficiency Test (S & L), 15-45 minutes

Test instructions

- Meet and Greet (warm up)
- Conversation

Role play instructions

- Role play activity

Interview instructions

- Interview activity

Non-interactive listening instructions

- Non-interactive Listening activity
- Leave taking (wind down)

